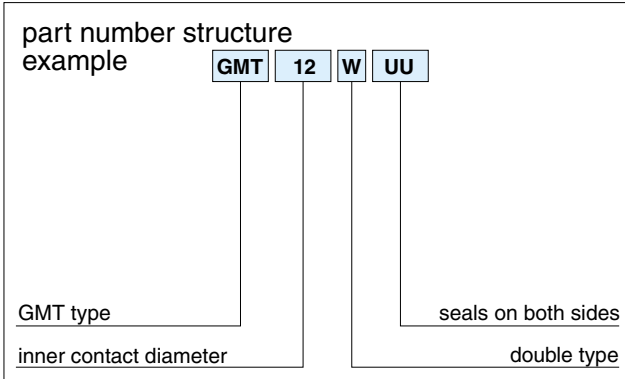
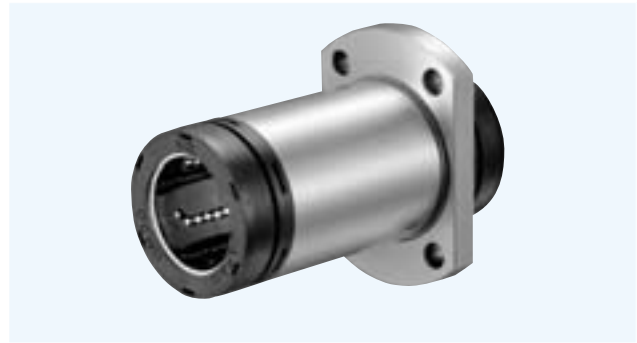
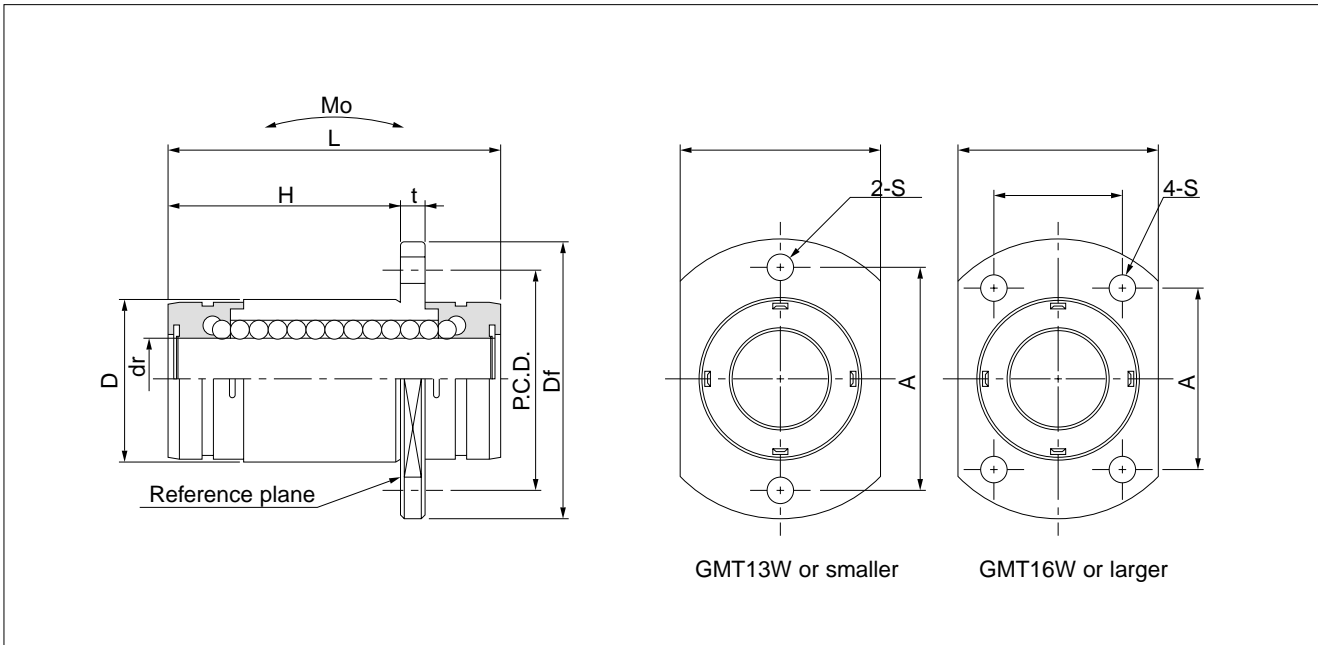


GMT-W TYPE

— Two Side Cut Double-Wide Flange Type —



part number	number of ball circuits	major dimensions					
		dr		D		L	H
		mm	tolerance μm	mm	tolerance μm		
GMT 6W UU	4	6	0 -10	12	0	28	17.8
GMT 8W UU	4	8		15	-13	36	25.1
GMT10W UU	4	10		19	0 -16	41	28.2
GMT12W UU	4	12		21		46	34.2
GMT13W UU	4	13		23		48	34.7
GMT16W UU	4	16	28	53	38.3		
GMT20W UU	6	20	0 -12	32	0 -19	65	49.2
GMT25W UU	6	25		40		91	70.5
GMT30W UU	6	30		45		99	74.3



flange						perpen- dicularity μm	basic load rating		allowable static moment M_o $\text{N} \cdot \text{m}$	mass g	shaft diameter mm
Df mm	t mm	W mm	A mm	F mm	S mm		C N	Co N			
28	4	18	20	—	3.5	15	323	530	1.5	21	6
32	4	21	24	—	3.5		431	784	3.3	33	8
40	4	25	29	—	4.5		588	1,100	5.0	52	10
42	4	27	32	—	4.5		813	1,570	7.6	65	12
43	4	29	33	—	4.5		813	1,570	8.1	74	13
48	4	34	31	22	4.5		1,230	2,350	13.8	104	16
54	5	38	36	24	5.5	20	1,400	2,740	20.0	171	20
62	5	46	40	32	5.5		1,560	3,140	34.8	331	25
74	8	51	49	35	6.6		2,490	5,490	57.5	447	30

1N \approx 0.102kgf 1N \cdot m \approx .102kgf \cdot m