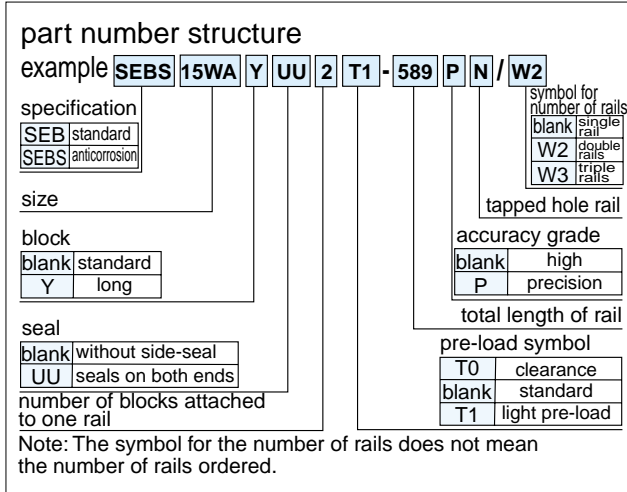
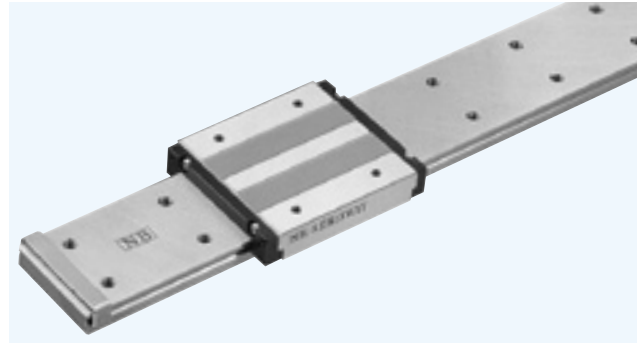


SEB-WA-N/WAY-N TYPE

— Standard Wide Type w/Tapped Hole Rail —



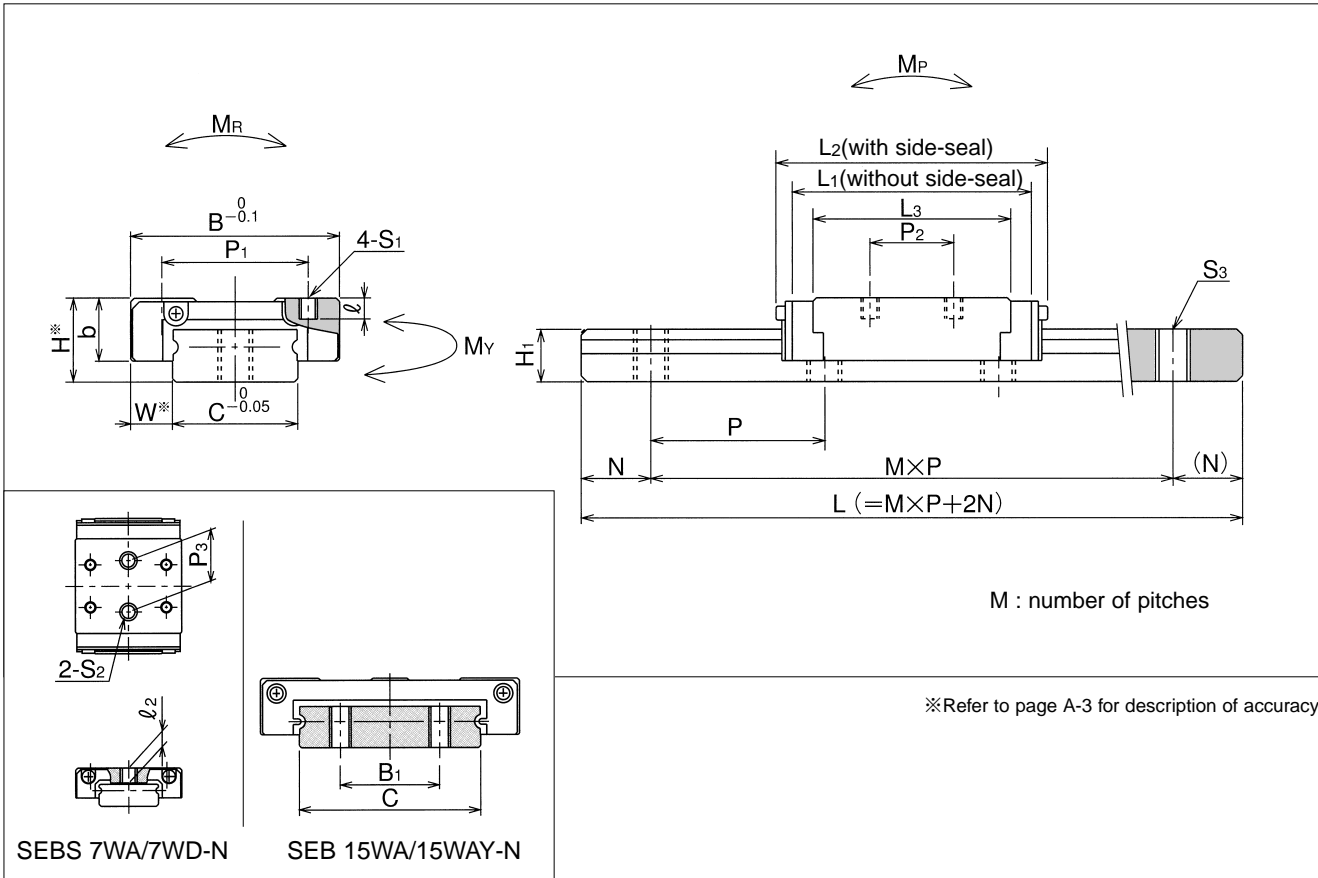
part number		assembly dimensions		block dimensions											
		H	W	B	L ₁	L ₂	P ₁	P ₂	S ₁	ℓ	L ₃	P ₃	S ₂	ℓ ₂	b
standard	anticorrosion	mm	mm	mm	mm	mm	mm	mm	mm	mm	mm	mm	mm	mm	mm
—	SEBS 7WA-N	9	5.5	25	30.1	32	18	12	M2.6	2.5	22.1	12	M4	3.5	7
	SEBS 7WD-N				39.6	41			19	19					
	SEBS 7WAY-N				48	50	23	24	M3	3	40.4	—			
SEB 9WA-N	SEBS 9WA-N	12	6	30	35.9	38	21	12	M2.6	3	28.4	—	—	—	9
SEB 9WD-N	SEBS 9WD-N				2.8	3			33.5	—					
SEB 9WAY-N	SEBS 9WAY-N				40.7	44	28	15	M3	3.5	47.8	—	—	—	11
SEB12WA-N	SEBS12WA-N	55	58.5	28	28	3.5									
SEB12WAY-N	SEBS12WAY-N	14	8	40	51.2	55	45	20	M4	4.5	42	—	—	—	13
SEB15WA-N	SEBS15WA-N				70.5	74									
SEB15WAY-N	SEBS15WAY-N				70.5	74	70.5	74	45	35	M4	4.5	61.1	—	—

rail size	standard rail length											
	L mm											
7W	50	80	110	140	170	200	230	260	290	350	410	
9W	50	80	110	140	170	200	230	260	290	350	410	
12W	70	110	150	190	230	270	310	350	390	430	470	
15W	70	110	150	190	230	270	310	350	390	430	470	

With custom length rails, kindly advise distance (N) from one end of rail to first hole.

Unless we are advised (N) distance by customer, we assume distance (N) to be as state in Page4.

Joint rails are used when the required length exceeds the maximum standard length listed in the dimensional tables. Contact NB for details.



guide-rail dimensions						basic load rating		allowable static moment			mass		size	
H ₁	C	B ₁	S ₃	N	P	dynamic C	static C ₀	M _P	M _Y	M _R	block kg	guide rail kg/m		
mm	mm	mm		mm	mm	kN	kN	N · m	N · m	N · m				
5.2	14	—	M4	10	30	1.57	2.45	7.8	9.8	15.7	0.02	0.5	7WA	
						2.36	3.68	17.2	21.6	23.6			7WD	
7.5	18	—	M4	10	30	2.25	3.33	13.7	16.7	30.4	0.04	0.96	7WAY	
						3.33	4.9	29.4	35.5	45.1			0.06	9WA
8	24	—	M5	15	40	2.94	4.31	20.6	24.5	51.9	0.08	1.40	9WD	
						4.31	6.27	44.1	52.9	76.4			0.11	9WAY
9.5	42	23	M5	15	40	4.9	7.06	40.2	48.0	148	0.15	2.95	12WA	
						7.35	10.6	94.1	108	225			0.22	12WAY
													15WA	
														15WAY

1kN ≒ 102kgf 1N · m ≒ 0.102kgf · m

	maximum length	
	standard	anticorrosion
470	—	700
470 530	1,000	1,000
550 630 710	1,900	
550 630 710 790 870		