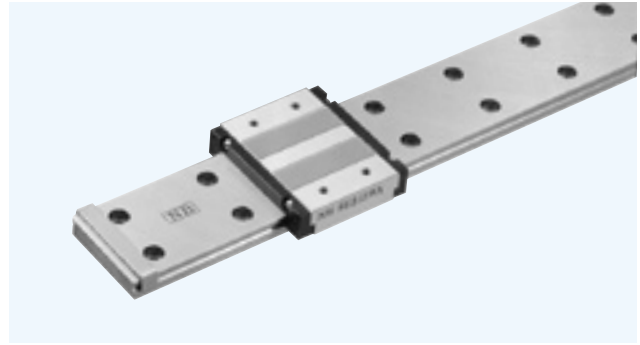


SEB-WA/WAY TYPE

– Standard Wide Type –



part number structure

example **SEBS 15WA Y UU 2 T1 - 589 P / W2**

specification	symbol for number of rails
SEB standard	blank single rail
SEBS anticorrosion	W2 double rails
	W3 triple rails

size	accuracy grade
block	blank high
blank standard	P precision
Y long	

seal	total length of rail
blank without side-seal	pre-load symbol
UU seals on both ends	T0 clearance
	blank standard
	T1 light pre-load

number of blocks attached to one rail

Note: The symbol for the number of rails does not mean the number of rails ordered.

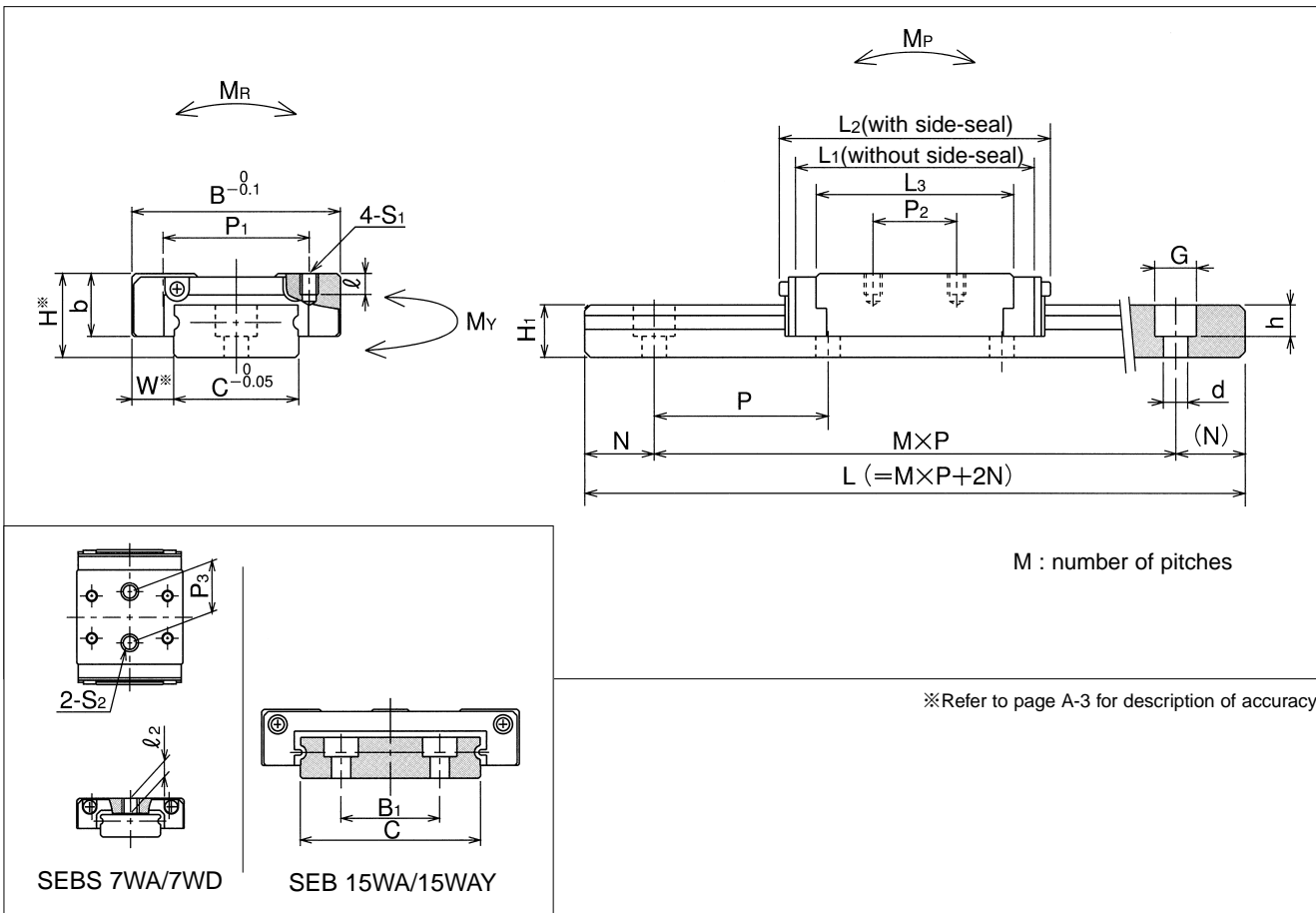
part number		assembly dimensions					block dimensions									
		H	W	B	L ₁	L ₂	P ₁	P ₂	S ₁	ℓ	L ₃	P ₃	S ₂	ℓ ₂	b	
standard	anticorrosion	mm	mm	mm	mm	mm	mm	mm	mm	mm	mm	mm	mm	mm	mm	
–	SEBS 7WA	9	5.5	25	30.1	32	18	12	M2.6	2.5	22.1	12	M4	3.5	7	
	SEBS 7WD				39.6	41	19	10	M3	2.8						
	SEBS 7WAY				48	50	23	24	M3	3	31.6	18				
SEB 9WA	SEBS 9WA	12	6	30	35.9	38	21	12	M2.6	3	28.4	–	–	–	9	
SEB 9WD	SEBS 9WD				48	50	23	24	M3	2.8						
SEB 9WAY	SEBS 9WAY				40.7	44	28	15	M3	3	40.4	–	–	–		
SEB12WA	SEBS12WA	14	8	40	55	58.5	28	28	M3	3.5	33.5	–	–	–	11	
SEB12WAY	SEBS12WAY				47.8	–					–					–
SEB15WA	SEBS15WA	16	9	60	51.2	55	45	20	M4	4.5	42	–	–	–	13	
SEB15WAY	SEBS15WAY				70.5	74					35					61.1

rail size	standard rail length											
	L											
	mm											
7WA	50	80	110	140	170	200	230	260	290	350	410	
9WA	50	80	110	140	170	200	230	260	290	350	410	
12WA	70	110	150	190	230	270	310	350	390	430	470	
15WA	70	110	150	190	230	270	310	350	390	430	470	

With custom length rails, kindly advise distance (N) from one end of rail to first hole.

Unless we are advised (N) distance by customer, we assume distance (N) to be as state in Page4.

Joint rails are used when the required length exceeds the maximum standard length listed in the dimensional tables. Contact NB for details.



guide-rail dimensions						basic load rating		allowable static moment			mass		size
H ₁	C	B ₁	d × G × h	N	P	C	Co	M _P	M _Y	M _R	block	guide rail	
mm	mm	mm	mm	mm	mm	kN	kN	N · m	N · m	N · m	kg	kg/m	
5.2	14	—	3.5 × 6 × 3.2	10	30	15.7	2.45	7.8	9.8	15.7	0.02	0.5	7WA
						2.36	3.68	17.2	21.6	23.6	0.03		7WD
7.5	18	—	3.5 × 6 × 4.5			2.25	3.33	13.7	16.7	30.4	0.04	0.96	7WAY
						3.33	4.9	29.4	35.3	45.1	0.06		9WA
8	24	—	4.5 × 8 × 4.5	15	40	2.94	4.31	20.6	24.5	51.9	0.08	1.40	9WD
						4.31	6.27	44.1	52.9	76.4	0.11		9WAY
9.5	42	23	4.5 × 8 × 4.5	15	40	4.9	7.06	40.2	48.0	148	0.15	2.95	12WA
						7.35	10.6	94.1	108	225	0.22		12WAY

1kN ≒ 102kgf 1N · m ≒ 0.102kgf · m

	maximum length	
	standard	anticorrosion
470	—	700
470 530	1,000	1,000
550 630 710	1,900	
550 630 710 790 870		