

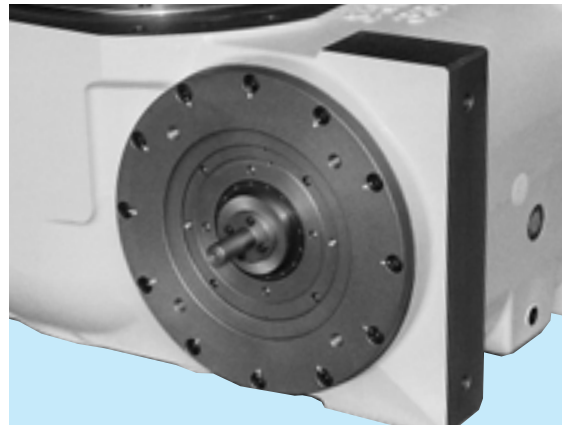
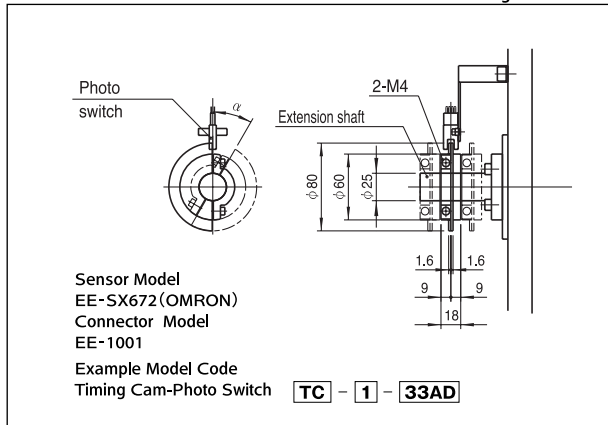
Specifications of geared motor

Table 33AD-2

Code		Motor Power (kW)	Actual Gear Ratio (i)	Output Shaft Speed N _M (rpm)		Output Allowable Torque T _R (N·m)		Moment of inertia J _M (kg·m ²)	Weight (kg)
200/220V	230V			50Hz	60Hz	50Hz	60Hz		
GM5.5-19.70AS-33AD	GM5.5-19.70BS-33AD	5.5	19.70	73	87	670	565	17.5×10 ⁻³	140
GM5.5-25.50AS-33AD	GM5.5-25.50BS-33AD		25.50	56	67	860	725		
GM5.5-31.43AS-33AD	GM5.5-31.43BS-33AD		31.43	46	55	1040	870		
GM5.5-34.96AS-33AD	GM5.5-34.96BS-33AD		34.96	41	49	1150	970		
GM5.5-39.10AS-33AD	GM5.5-39.10BS-33AD		39.10	37	44	1280	1080		
GM5.5-44.03AS-33AD	GM5.5-44.03BS-33AD		44.03	33	39	1440	1210		
GM5.5-47.91AS-33AD	GM5.5-47.91BS-33AD		47.91	30	36	1560	1310		
GM5.5-57.00AS-33AD	GM5.5-57.00BS-33AD		57.00	25	30	1840	1550		
GM7.5-10.93AS-33AD	GM7.5-10.93BS-33AD	7.5	10.93	133	159	510	425	28.0×10 ⁻³	160
GM7.5-15.64AS-33AD	GM7.5-15.64BS-33AD		15.64	93	111	720	605		
GM7.5-19.70AS-33AD	GM7.5-19.70BS-33AD		19.70	74	88	910	760		
GM7.5-25.50AS-33AD	GM7.5-25.50BS-33AD		25.50	57	68	1170	980		
GM7.5-31.43AS-33AD	GM7.5-31.43BS-33AD		31.43	46	55	1400	1170		
GM7.5-34.96AS-33AD	GM7.5-34.96BS-33AD		34.96	41	50	1550	1300		
GM7.5-39.10AS-33AD	GM7.5-39.10BS-33AD		39.10	37	45	1730	1450		
GM7.5-44.03AS-33AD	GM7.5-44.03BS-33AD		44.03	33	40	1940	1630		

Torque limiter mounting specifications (option)

Figure 33AD-3



Mounting extended shaft

Precautions

- The dimension drawing(Figure 33AD-1, 33AD-2) shows the standard mounting position for geared motor.
- Model 33AD can be equipped with 5.5kW and 7.5kW motor. 11kW motor is also available as special instructions.
- Up to 3 sets of timing cams and photo switches can be added as necessary.
- The timing cam can be freely adjusted to any period(α)below 180°.

Standard input shaft (T surface side)

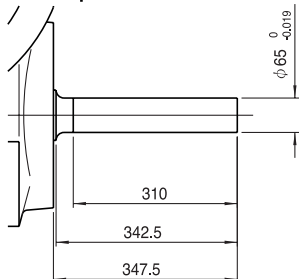


Figure 33AD-4

Output fixed flange specifications

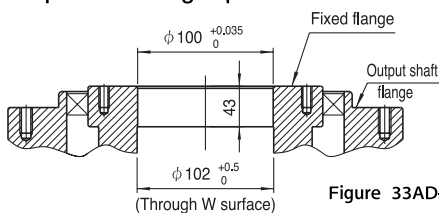


Figure 33AD-5

Locations of oil plug, etc., and oil capacity

Figure 33AD-6

Mounting position	1	2	5
Location			
Oil capacity(ℓ)	60	55	60

Precautions

- Each point indicated in the mounting positions shown in Figure 33AD-6 represents (starting at top) the oil plug (PT3/4), oil level (VB), and drain (PT3/4).
- The mounting positions correspond to code i for the indexing drives.
- The oil capacities indicated in Figure 33AD-6 are given in general figures and will differ according to the profile of the cam and the number of cam followers.